



Product Code: GDP3001
DEC:Double Track Top Bracket
For use with double track door and suitable for 11mm shaft.
Thickness:3mm steel
Finish:zinc plated



Product Code: GDP3001-S
DEC:Residential Top Bracket
For use with double track door and suitable for 11mm shaft.
Thickness:2.5mm
Finish:zinc plated



Product Code: GDP3002
DEC:Lengthen Double Track Top Bracket (Bending)
For use with double track door and suitable for 11mm shaft.
Thickness:3mm
Finish:zinc plated



Product Code: GDP3002
DEC:Lengthen Double Track Top Bracket
For use with double track door and suitable for 11mm shaft.
Thickness:3mm
Finish:zinc plated



Product Code: GDP3003
DEC:RESIDENTIAL TOP BRACKET - 1 BOLT
BRIGHT ZINC PLATED STEEL
14 GAUGE ROLLER CARRIER
15 GAUGE BASE PLATE FOR USE WITH 7/16" DIAMETER
MOUNTING HOLES ON 3" CENTERS (VERTICALLY)
ADJUSTMENT OF 3/8" MINMUM TO 3" MAXIMUM



Product Code: GDP3003-B
DEC:RESIDENTIAL TOP BRACKET - 1 BOLT
BRIGHT ZINC PLATED STEEL
14 GAUGE ROLLER CARRIER
14 GAUGE BASE PLATE FOR USE WITH 7/16" DIAMETER
MOUNTING HOLES ON 3" CENTERS (VERTICALLY)
ADJUSTMENT OF 3/8" MINMUM TO 3" MAXIMUM



Product Code: GDP3004
DEC:COMMERCIAL TOP BRACKET
• BRIGHT ZINC PLATED STEEL
• 12 GAUGE ROLLER CARRIER, 12 GAUGE BASE PLATE
• MOUNTING HOLES ON 4 3/4" CENTERS (VERTICALLY)
• ADJUSTMENT OF 7/16" MINMUM TO 3 1/2" MAXIMUM
• FOR USE WITH 7/16" DIAMETER



Product Code: GDP3005
DEC:RESIDENTIAL BOTTOM BRACKET
• BRIGHT ZINC PLATED T=2.3mm STEEL
• FOR 2" TRACK WITH 7/16" DIAMETER STEM ROLLERS
• MILFORD PIN CABLE ATTACHMENT
• FIT DOORS THICKNESS FROM 1 3/8" TO 2"
• INCLUDES 1 LEFT HAND AND 1 RIGHT HAND BRACKET



Product Code: GDP3005-S
DEC:Residential Bottom Bracket
The advised max,door weight is 165kgs.
Both left and right available.
Thickness:2.5mm .
Finish:zinc plated



Product Code: GDP3006
DEC:Track Bottom Bracket
The bracket is suitable for inside cable fixing for 2 Inch tracks.
Base plate:2mm. Back plate:2.5mm.
Finish:zinc plated



Product Code: GDP3005
DEC:COMMERCIAL BOTTOM BRACKET

- BRIGHT ZINC PLATED T=2.5mm STEEL
- FOR 2" TRACK WITH 7/16" DIAMETER STEM ROLLERS
- MILFORD PIN CABLE ATTACHMENT
- FIT DOORS THICKNESS FROM 1 3/8" TO 2"
- INCLUDES 1 LEFT HAND AND 1 RIGHT HAND BRACKET



Product Code: GDP3013-A
DEC:2" SAFETY BOTTOM BRACKET (ADJUSTABLE)

- BRIGHT ZINC PLATED STEEL
- FOR 2" TRACK WITH 7/16" DIAMETER STEM ROLLERS
- HEAVY DUTY DESIGN
- MAXIMUM DOOR WEIGHT 1300 LBS



Product Code: GDP3013-B
DEC:2" SAFETY BOTTOM BRACKET (NONADJUSTABLE)
• BRIGHT ZINC PLATED STEEL
• FOR 2" TRACK WITH 7/16" DIAMETER STEM ROLLERS
• HEAVY DUTY DESIGN
• MAXIMUM DOOR WEIGHT 1300 LBS



Product Code: GDP3014
DEC:3" SAFETY BOTTOM BRACKET
• BRIGHT ZINC PLATED STEEL
• FOR 3" TRACK WITH 7/16" DIAMETER STEM ROLLERS
• HEAVY DUTY DESIGN
• MAXIMUM DOOR WEIGHT 1650 LBS



Product Code: GDP3015
DEC:Industrial Bottom Bracket
The bracket is suitable for inside cable fixing for 2 Inch tracks.
Base plate:2.5mm. Back plate:4.0mm.
Finish:zinc plated



Product Code: GDP3016
DEC:Adjustable Bottom Bracket
The bracket is suitable for outside cable fixing for low system
Includes bolts and roller slides for 11mm shaft
Both left and right available
Thickness: 3mm
Finish:zinc plated



Product Code: GDP3023-A

DEC:Side Bracket

The bracket is provided with slotted holes and suitable for the fixing of track.

Thickness:2.5mm.

Finish:zinc plated



Product Code: GDP3023-B

DEC:Side Bracket

The bracket is provided with slotted holes and suitable for the fixing of track.

Thickness:2.5mm.

Finish:zinc plated



Product Code: GDP3026

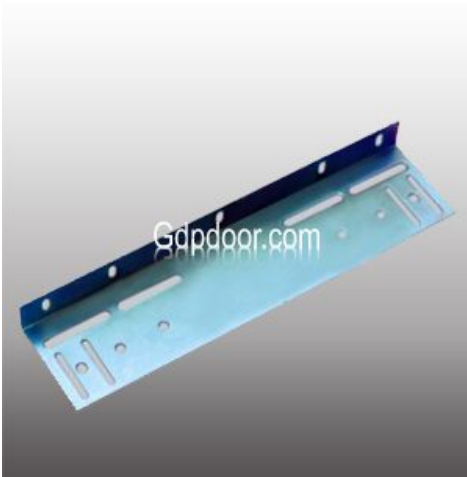
DEC: Flag-shaped Joint Angle

The angle iron is made of 2.3mm steel and is provided with slotted holes and suitable for the fixing of track.

Both left and right available.

Thickness: 2.0mm

Finish:zinc plated



Product Code: GDP3028

DEC: Industrial Joint Angle

The angle iron is made of 2mm steel and is provided with slotted holes and suitable for the fixing of track.

Thickness:2mm

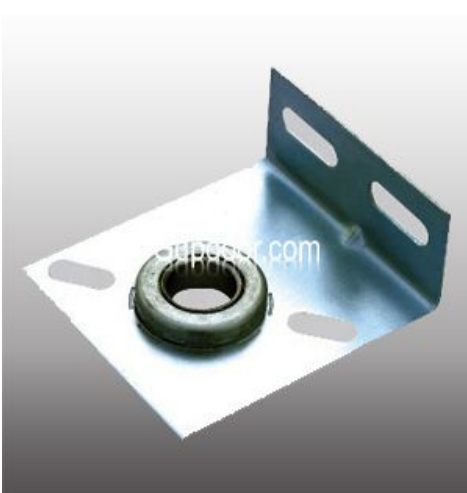
Finish: zinc plated



Product Code: GDP3028-N
DEC: Industrial Joint Angle
The angle iron is made of 2.5mm steel and is provided with slotted holes and suitable for the fixing of track.
Thickness:2mm
Finish: zinc plated



Product Code: GDP3029
DEC: Joint Angle Iron
The angle iron is made of 2mm steel and is provided with slotted holes and suitable for the fixing of track.
Thickness:2.3mm
Finish: zinc plated



Product Code: GDP3032
DEC:Residential Bearing Bracket
The bearing bracket is provided with a 1 Inch bearing installed.
The distance from wall flange to bearing center:85.5mm.
Thickness:2.5mm
Finish:zinc plated



Product Code: GDP3033
DEC:EBF BEARING BRACKET
•BRIGHT ZINC PLATED 12 GAUGE STEEL
•INCLUDES 1 LH AND 1 RH BRACKET
•3 3/8" BEARING CENTER TO WALL DISTANCE
•1" BORE BEARING INSTALLED



Product Code: GDP3033-B

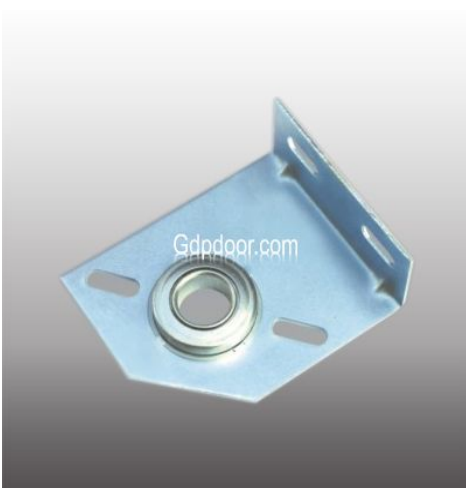
DEC:EBF Bearing Bracket

**The bearing bracket is provided with a 1 Inch bearing installed.
Suitable for residential or smaller industrial door.**

The distance from wall flange to bearing center:144mm.

Thickness:2.5mm

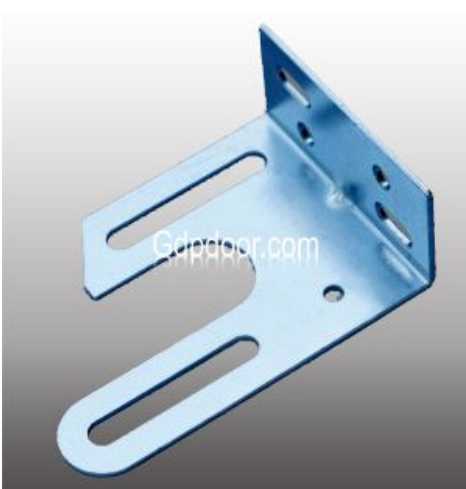
Finish:zinc plated



Product Code: GDP3037

DEC:CENTER BEARING BRACKET

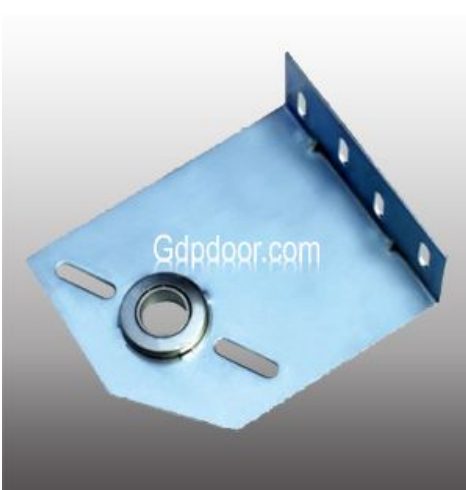
- BRACKET, SPRING ANCHOR WITH BEARING 12 GA
- BRIGHT ZINC PLATED 11 GAUGE STEEL
- 3 3/8" BEARING CENTER TO WALL DISTANCE
- FOR USE WITH 3 3/4" ID SPRING AND SMALLER
- 1" BORE BEARING INSTALLED



Product Code: GDP3038

DEC:ADJUSTABLE RESIDENTIAL CENTER BRACKET

- BRACKET, SPRING ANCHOR MINI USA
- BRIGHT ZINC PLATED 12 GAUGE STEEL
- ADJUSTABLE BEARING PLATE
- ADJUSTABLE CENTERLINE 2 3/8" TO 4 1/4" (Mini USA)
- FOR USE WITH STEEL OR NYLON BEARINGS
- -(NOT INCLUDED)



Product Code: GDP3039

DEC:Commercial Bearing Bracket

**The bearing bracket is provided with a 1 Inch bearing installed.
Both left and right available.**

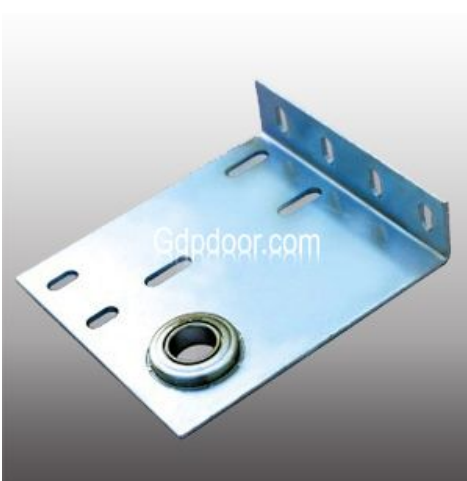
The distance from wall flange to bearing center:144mm.

Thickness:3.0mm

Finish:zinc plated



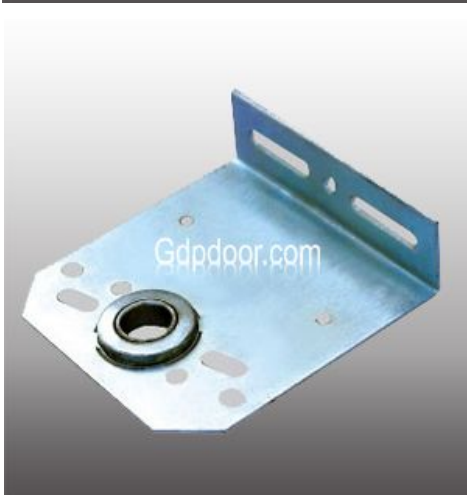
Product Code: GDP3040
UNIVERSAL SPRING ANCHOR
. FOR 1 3/4" TO 6" ID SPRING
. 8 GAUGE



Product Code: GDP3041
DEC:Commercial Bearing Bracket
The bearing bracket is provided with a 1 Inch bearing installed.
The distance from wall flange to bearing center:144mm.
Thickness:2.5mm
Finish:zinc plated



Product Code: GDP3042
DEC:Industrial Bearing Bracket
The bearing bracket is provided with a 1" bearing installed.
The distance from wall flange to bearing center:85mm,
Thickness:4.0mm
Finish:zinc plated



Product Code: GDP3043
DEC:Industrial Bearing Bracket
The bearing bracket is provided with a 1" bearing installed.
The distance from wall flange to bearing center:105mm,
123mm, 148mm, 185mm.
Thickness:4.0mm
Finish:zinc plated



Product Code: GDP3044
DEC:Adjust Bracket
Thickness:4.0mm
Finish:zinc plated



Product Code: GDP3045
DEC:A type Bracket
The bracket is left and right type,for the shutter doors
Finish: Zinc plated



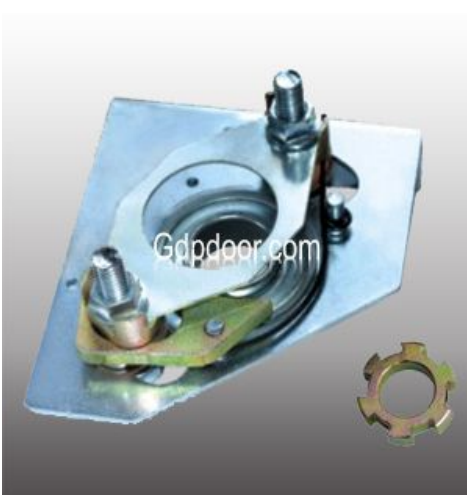
Product Code: GDP3046
DEC:S Hook
Finish: Zinc plated



Product Code: GDP3047
DEC:Open eye bolt with nuts
Finish: Zinc plated



Product Code: GDP8001
DEC: Spring Break Protection
1 Inch Bore
Spring break protection device. use 3 3/4"spring fitting
Finish:zinc plated



Product Code: GDP8002
DEC: Spring Break Protection
1 Inch Bore
Spring break protection device. use 2"spring fitting
Finish:zinc plated



Product Code: GDP8003
DEC: Spring Break Protection
1 Inch Bore
Spring break protection device. use 2"spring fitting
Finish:zinc plated



Product Code: GDP8004
DEC: Spring Break Protection
1 Inch Bore
Spring break protection device. use 2 5/8"spring fitting
Finish:zinc plated